

# VILLA NIRVANA

- Santa Gertrudis de Fruitera -



20



9



10





## ABOUT THE AREA

Give a look at the hills surrounding - you are in the true heart of Ibiza.

Located in the middle of the island, the Santa Gertrudis area is Ibiza in a microcosm.

The village with a strong Bohemian style of living has expanded rapidly but carefully over the last few years, many artists, sculptors and musicians have settled here you will find their works everywhere and especially at the Bar Costa where penniless artists in the hippy era would swap painting for meals.

Food lover? From gourmet cuisines to rustic local bars any taste will be pleased.

## LOCATION

Airport 20 minutes

Ibiza Town 18 minutes

Santa Gertrudis 5 minutes

Sant Antoni 12 minutes





## **OVERVIEW** (Max capacity 20 people)

### **Main House**

- ▶ 4 En-suite double bedrooms (master bedroom equipped with Jacuzzi)
- ▶ 1 En-suite double bedroom (individual external access)
- ▶ 2 Connected double bedrooms, shared bathroom and cosy living room area (individual external access)
- ▶ Modern kitchen and large dining area
- ▶ Bright and spacious living room

### **Guest House 1**

- ▶ 1 En-suite double bedroom
- ▶ Cosy living room area

### **Guest House 2**

- ▶ 2 double bedrooms with shared bathroom
- ▶ Cosy living room and dining area

### **Outdoor Area**

- ▶ Huge fenced garden with various chill-out zones
- ▶ Large dining table with lovely lounge corner
- ▶ Swimming pool with many sunbeds
- ▶ Service bathroom by the pool
- ▶ Covered dining area for 20 people with BBQ

## **FACILITIES**

- Country view • Kid-Friendly • Fenced Garden • Electric gates • Parking • Air conditioning • Alarm • Safe boxes • Fully equipped kitchen • BBQ • Two outdoor dining areas • Wi-Fi • Satellite TV • Projector
- Sound system • Jacuzzi • Swimming pool
- Sunbeds • Swimming Pool • Laundry
- Dryer • Washing machine • Central heating
- Beach Volley's Court • Bowls Court

## **CLEANING SERVICES**

Cleaning service included and requires 3h (circa).

Available every:

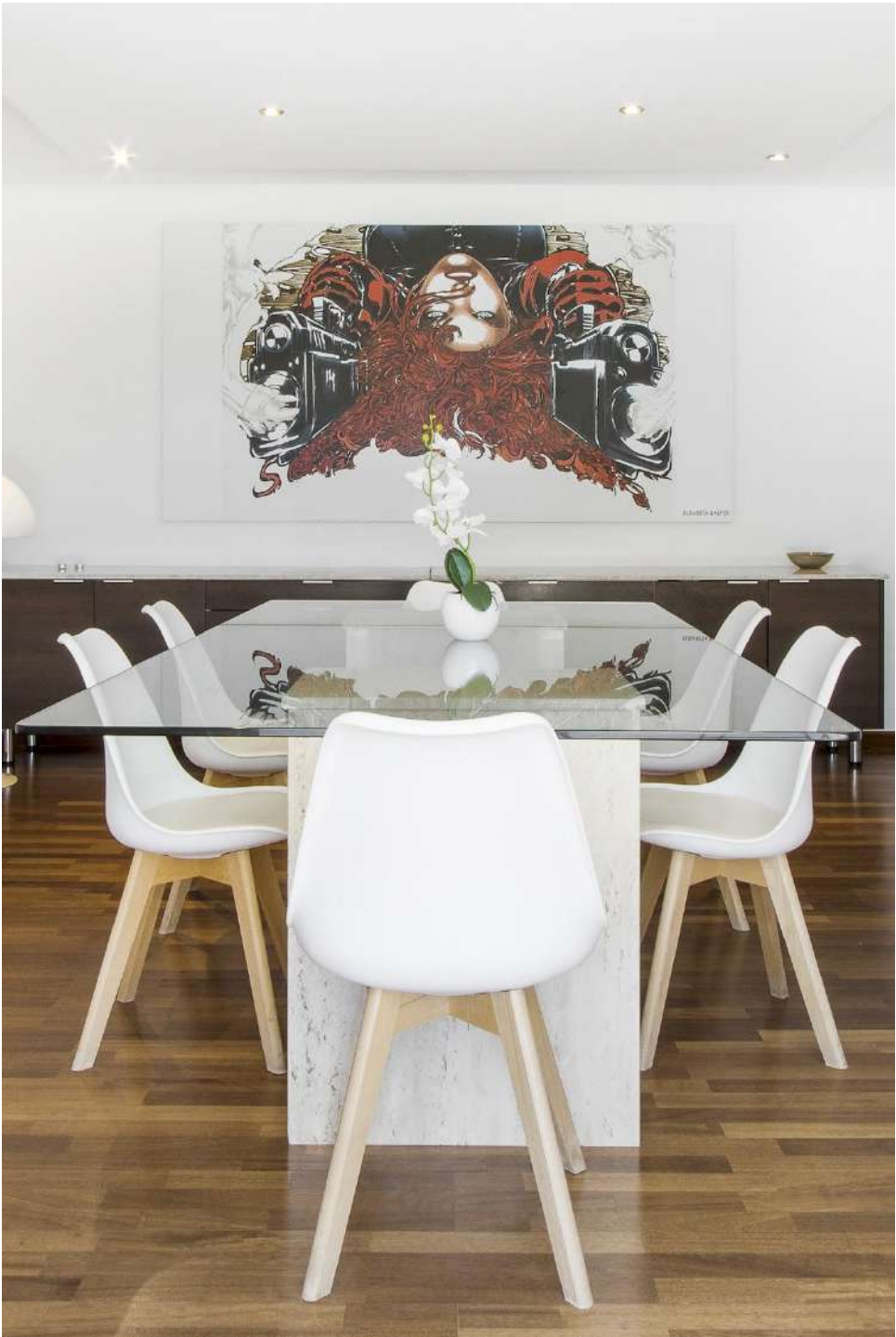
- ▶ Monday
- ▶ Tuesday
- ▶ Wednesday
- ▶ Thursday
- ▶ Friday
- ▶ Saturday

\*Fresh towels twice a week











## VILLA NIRVANA

Massive - this is probably the first word that will come to your mind.

Villa Nirvana is a huge property for both indoor and outdoor, perfect for large groups or families the 850 m<sup>2</sup> are built on two floors plus a detached guest house and are surrounded by a fenced garden with palm trees.

Jump in the pool, play beach volley or challenge someone at the bowls court . . .  
who lose must take care of the barbecue!















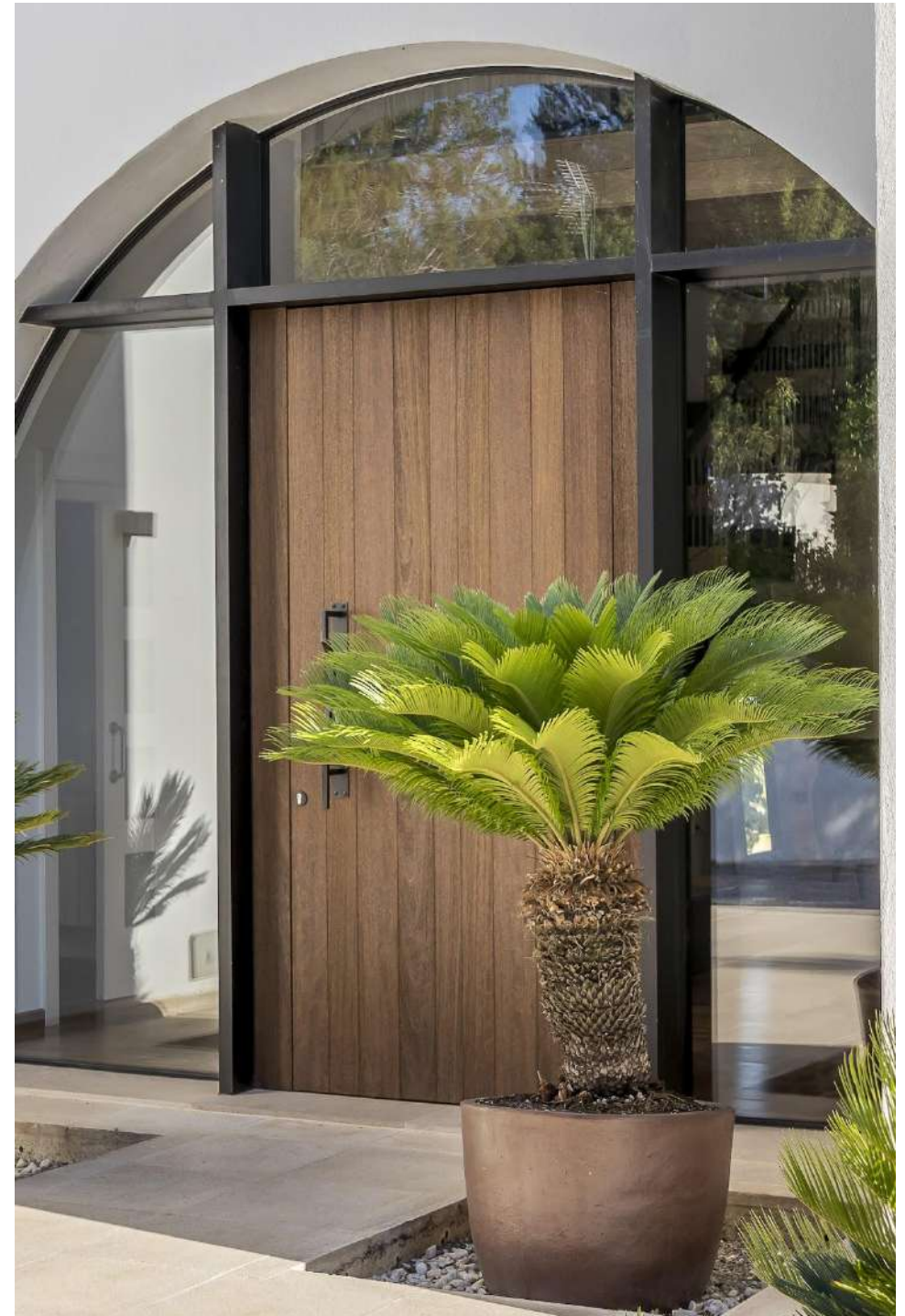






## MAIN HOUSE (2 floors)

- ▶ 4 En-suite double bedrooms  
(master bedroom equipped with Jacuzzi)
- ▶ 1 En-suite double bedroom  
(individual external access)
- ▶ 2 connected double bedrooms, shared  
bathroom and cosy living room area  
(individual external access)
- ▶ Modern kitchen and large dining area
- ▶ Bright and spacious living room

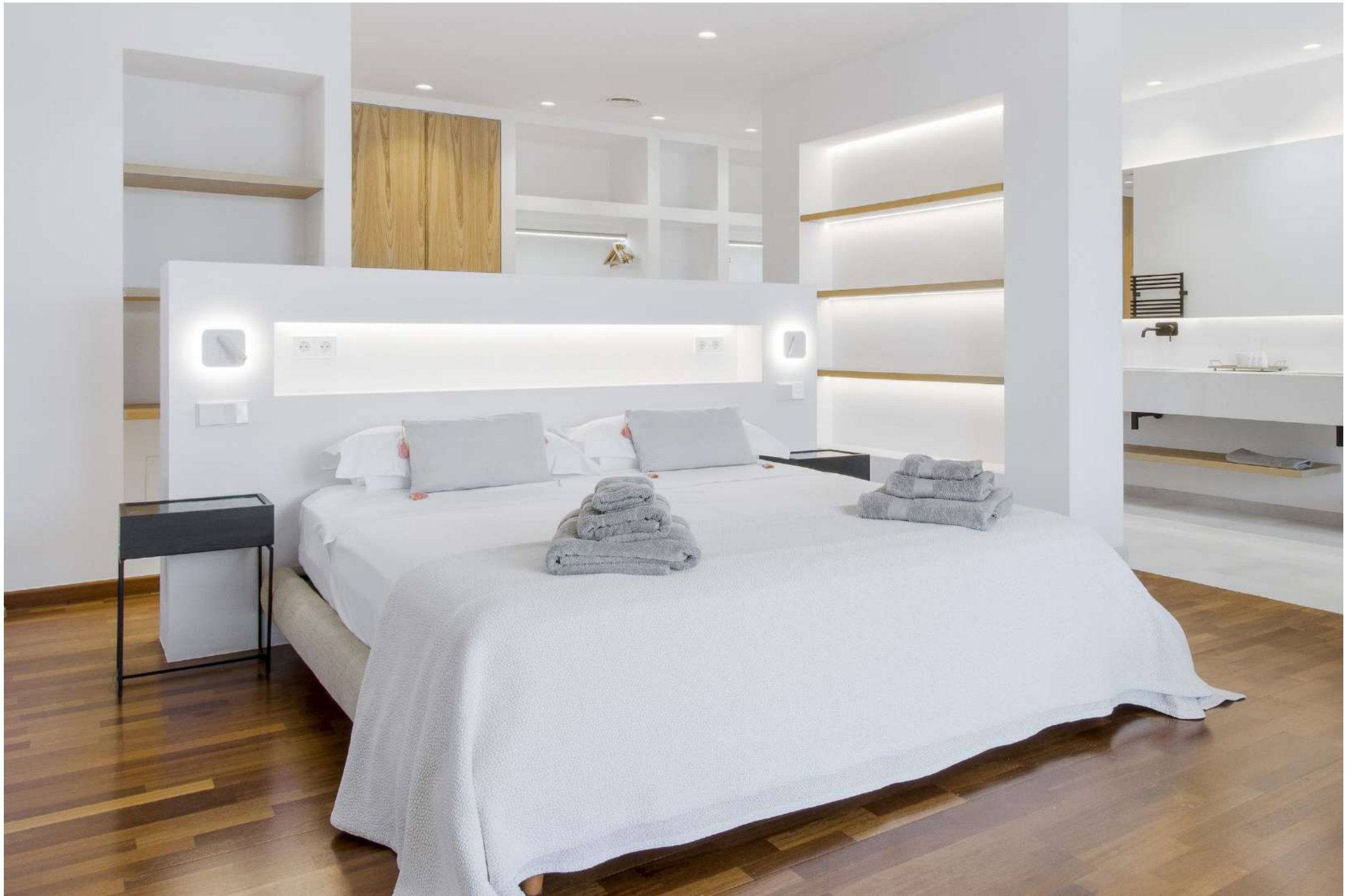












































## GUEST HOUSE ONE

- ▶ 1 en-suite double bedroom
- ▶ Cosy living room area



## GUEST HOUSE TWO

- ▶ 2 double bedrooms with shared bathroom
- ▶ Cosy living room and dining area







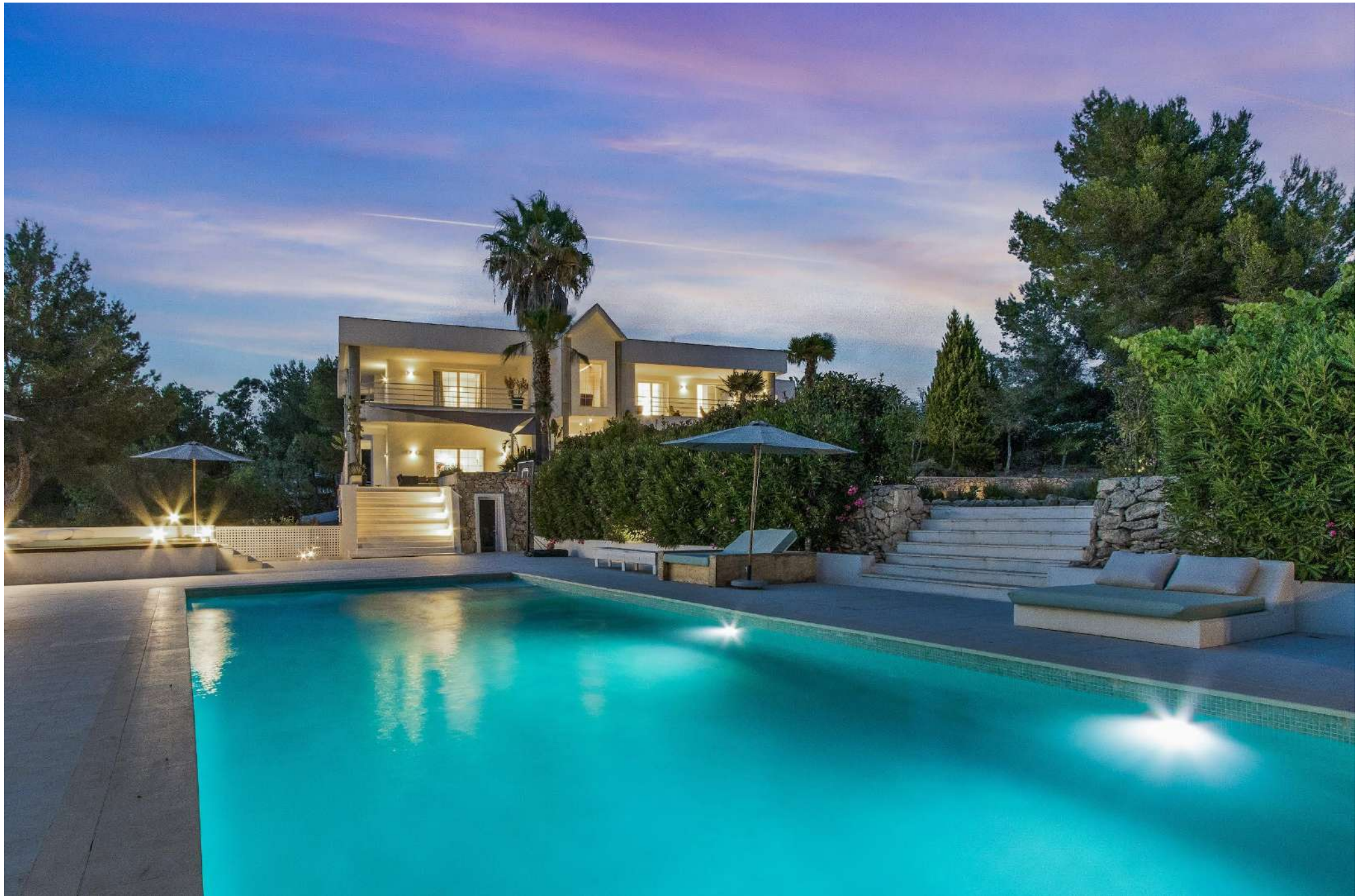














MOANA PITIUSAS